



# Using the Breaker

1. Wear protective equipment including ear defenders and goggles.
2. Do not operate the breaker until the tool is on the work surface. Do not start if the tool has no load.
3. Keep the air hose clear of the tool bit and any sharp edges on the work.
4. Ensure there are no apparent air leaks.
5. At intervals, while working, stop and check for air leaks or other possible faults.
6. Always grip the breaker correctly with two hands while using it.
7. Stop the breaker and shut off the air supply before making any adjustments.
8. Watch out for signs that vibration may be affecting your hands. If your fingers start to tingle or feel numb, take a short break from using the breaker. Exercise your fingers to encourage blood circulation. **Ask the hire company for a copy of the HAE leaflet no. 2150 – Hand-arm vibration or visit [www.hse.gov.uk/vibration](http://www.hse.gov.uk/vibration)**
9. To help prevent vibration affecting your hands, operate the machine for shorter periods. Keep your hands warm - wearing gloves may help do this.
10. Stop work and shut down if approached by someone.
11. Shut down and release the air pressure before disconnecting any part of the equipment.
12. If the hose appears to be damaged in any way shut off the air and release the pressure before inspecting it. Do not use damaged or leaking hoses replace them.
13. Shut off the air and release the pressure before leaving the breaker unattended.
14. If the equipment does not work properly do not attempt to repair it. Contact the hire company.

Please keep this leaflet safely as it may be required for reference at a future date



Hire Association Europe  
2450 Regents Court  
The Crescent  
Birmingham Business Park  
Soliuhull B37 7YE

Telephone: 44 (0) 121 380 4600  
44 (0) 121 333 4109  
Fax: mail@hae.org.uk  
Email: www.hae.org.uk  
website:

©Copyright Hire Association Europe April 2011

Any unauthorised reproduction – manually or electronically – is STRICTLY prohibited

1. Compressed air can cause serious injuries if it is misused. You must not use it in an unauthorised way or without the correct equipment.
2. Do not point a jet of compressed air at people or animals. It can cause injury even through clothing.
3. Do not blast air onto skin. It can penetrate or blow splinters in.
4. Do not use it to blowout dust and debris from portable tools, the airborne dust particles could be dangerous to health.
5. Compressed air must not be used to clean clothes or work areas. It must not be used in an unauthorised way and without correct equipment.
6. Do not use at a greater pressure than recommended.
7. Do not connect or disconnect any tool or hose while the system is pressurised, release the pressure first.
8. Some compressed air equipment supplies a minute amount of oil-mist in compressed air to prevent any air tools seizing up. Check that any lubrication container on the compressor is topped up with the recommended oil. Check the level regularly.
9. If the equipment develops a leak, shut down immediately and release the pressure. Contact the hire company.

COMPRESSED AIR



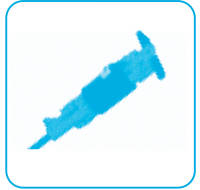
# Before Starting Work...

Useful Reference Points • [www.hae.org.uk/businessguard](http://www.hae.org.uk/businessguard)

# Breaker

The rules and procedures in force where people are at work may require the person responsible for this equipment to carry out a specific risk assessment.

It is important to read all of this leaflet BEFORE you use the Breaker



1. Plan your work and think ahead to make sure you will always be working safely.
2. If you have not used a compressed air breaker before, familiarise yourself with the machine on some straightforward work before you start on the main task.
3. Compressed air can be hazardous. Take care not to injure yourself or others.
4. If a compressor is being used to supply the compressed air, the safety instructions provided with the compressor must be read.
5. This heavy duty breaker is designed for breaking up roadwork, concrete and asphalt surfaces; and compacting, using the appropriate tools.
6. The action of this breaker can cause injury or damage if the machine is not used in a careful and controlled way.
7. The following items of personal protective equipment must be worn as a minimum: Goggles; dust mask – FFP3 minimum; ear muffs or plugs giving protection for levels up to 80dB(A); safety boots; gloves.
8. This machine must not be used by minors, or by anyone under the influence of drugs or alcohol.
9. This breaker is designed for operation by an able bodied adult. Anyone with either a temporary or permanent disability must seek expert advice before using it.



Every effort has been made by HAE/EHA to ensure that the information given in this document and supporting material is accurate and not misleading. HAE/EHA cannot accept responsibility for any loss or liability perceived to have arisen from the use of any such document/material. Only Acts of Parliament and Statutory Instruments have the force of law and only the courts can authoritatively interpret the law.

Telephone: 44 (0) 121 380 4600  
44 (0) 121 333 4109  
Fax: mail@hae.org.uk  
Email: www.hae.org.uk  
website:

Hire Association Europe  
2450 Regents Court  
The Crescent  
Birmingham Business Park  
Soliuhull B37 7YE



1. The following items of personal protective equipment (ppe) are the minimum that should be worn whenever using this machine. Particular jobs or environments may require a higher level of protection.
2. Impact resistant goggles must be worn when working with this machine.
3. This equipment is likely to cause noise levels up to 80 dB(A) - wear appropriate ear muffs or plugs giving hearing protection for this level as a minimum.
4. An appropriate dust-mask (with a minimum of FFP3(s) protection) must be worn when breaking material that causes dust.
5. Safety boots must be worn.
6. Anyone who is working close-by will also need to wear appropriate personal protective equipment.
7. Breaking concrete makes a large amount of dust and debris - cover any surfaces or objects that may be damaged, or difficult to clean.
8. Check that there are no buried electric cables, gas, or water pipes where the work is being carried out. Contact the hire company if cable detection equipment is required.
9. Protect other people from the noise, debris, and dust. Warn others to keep away, put barriers around the work area.
10. Check that there are no buried electric cables, gas, or water pipes where the work is being carried out. Contact the hire company if cable detection equipment is required.
11. Make sure that the area is clear and safe and that no-one is close-by or could cause distraction.
12. Protect other people from the noise, debris, and dust. Warn others to keep away, put barriers around the work area.
13. An appropriate dust-mask (with a minimum of FFP3(s) protection) must be worn when breaking material that causes dust.
14. Anyone who is working close-by will also need to wear appropriate personal protective equipment.
15. Breaking concrete makes a large amount of dust and debris - cover any surfaces or objects that may be damaged, or difficult to clean.

OPERATORS

BREAKER

WORK AREA